

NORTHERN IRELAND

Tales of iron shots and iron thrones. Sightings of birdies, eagles, but sadly no dragons!

CHRISTMAS GIFT IDEAS

Our guide to help you make the right choice for those special people in your life

CANADA

Planes, Trains and Automobiles
Jane Finn travels to the stunning Sault Ste Marie in Ontario

PLANET GOLF REVIEW

ISSUE 14

IRELAND & SCOTLAND CRUISE

The perfect way to play some of the world's iconic links golf courses

STAY, PLAY & SPA

Linthwaite House perched above Lake Windermere making the most of its unspoiled views

EQUIPMENT & APPAREL REVIEWS

Srixon, Mizuno, Evnroll, Glenmuir, Sunderland of Scotland and Shot Scope just in time for Christmas

VIEW.COM



WELCOME

How quickly time flies when you're having fun, it only seems like yesterday that I was penning last year's Christmas letter to you but I hope it has been a wonderful year for you and your family.

It has been a fun packed year for us at PGR and in this issue, we bring you Jane's feature from her home province of Ontario and a wonderful train journey up to Sault Ste Marie and Lake Superior. Peter takes his Canon camera to the US and focuses his lens on California life. We feature One Ocean Expeditions which cruises to some of the world's great links courses in Ireland and Scotland and we also visited Northern Ireland just before this year's Open Championship to bring you some of the other courses you can play on your pilgrimage to play Royal Portrush. In our Play, Stay & Spa section we bring you the

beautiful Linthwaite House sitting above Lake Windermere in the Lake District.

With Christmas fast approaching we offer you gift ideas with a difference. We have put together ideas for golfers, travel gadgets and working with our friends at Furnishful, gifts for those looking for something unique and different.

For golfers, we bring you equipment and apparel reviews from Srixon, Mizuno, Evnroll, Sunderland and Glenmuir.

As always from myself and the team at PGR we wish you and your family a wonderful festive season, a New Year full of happiness, and happy travels, be it for golf, exploring or just laying on a beach.

MEET THE TEAM

Editor

James Mason

Art Director

Jimmy Kennedy

Hotel and Spa Editor

Charmaine Hibbert

Contributing travel writers

Kukua Akumanyi

Teresa Barnett

Peter Ellegard

Jane Finn

Bernadette Kennedy

Stephanie Mason

General enquiries

enquiries@planetgolpreview.com

VIEW.COM

PLANTOITORED

REVIEW





7



Billy Wilson

10

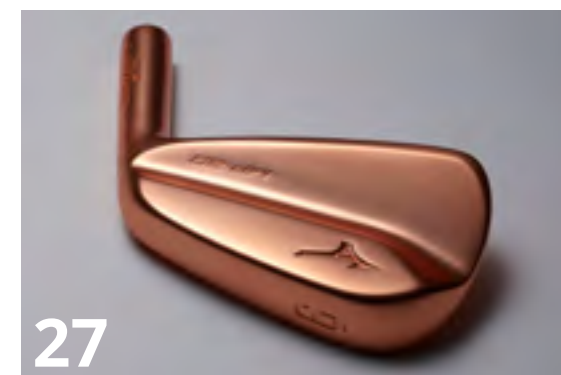
- p 4 Christmas Crackers**
 3-pages of stress free Christmas gift ideas for golfers, adventurers and something unique with links to buy online, so you don't need to leave the warmth of your home
- p 7 California In Focus**
 Lights, Camera, Action, Peter heads over to the West Coast of the US and brings you a taste of California
- p 10 Sault Ste Marie, Canada**
 Jane brings to life the beautiful scenery of Ontario on her train journey to Sault Ste Marie and Lake Superior
- p 15 Northern Ireland**
 Who can forget Shane Lowry winning this year's Open Championship at Royal Portrush, we highlight where you can play and things to do on your visit to Northern Ireland
- p 21 Ireland & Scotland**
 One Ocean Expeditions have added a cruise to their schedule to play some of Ireland and Scotland's world-renowned links courses
- p 27 Equipment & Apparel Reviews**
 Featuring Srixon, Mizuno, Evnroll, Sunderland, Glenmuir and Shot Scope
- p 43 Stay, Play & Spa**
 The wonderful Lake Windermere and Linthwaite House the getaway combination

STENZENCO

REVIEW



21



27



43

**Puma PWRADAPT
Golf Shoes**

£140 / €180 / \$187

[Click here](#)



Ping Norse PrimaLoft® Vest

£110 / €112 / \$169

[Click here](#)



Ping Ladies Nova

£85 / €96 / \$105

[Click here](#)



**Mizuno Mens & Ladies
Nexlite golf shoes**

£99.99 / €106 / \$110

[Click here](#)



**Puma KING F9
SPEEDBACK Driver**

£349 / €399 / \$442

[Click here](#)



Puma Preston ¼ zip

£65 / €80 / \$83

[Click here](#)



Present & Correct

Searching for the perfect Golf, Travel
or Home Christmas gift? Don't worry
we've got you covered



**Shot Scope V2 GPS Perfor-
mance Tracking System**

£139 / €169 / \$159

[Click here](#)

CHRISTMAS



Antler Atom Exclusive, Lightweight Hard Shell Suitcase

£126.75 /
€146.99 /
\$161.99

[Click here](#)

Skyroam Solis: Mobile WiFi Hotspot & Power Bank

£135 / €149 / \$199.99

[Click here](#)



Cabeau Evolution S3 Travel Pillow

£49.99 / €39 / \$39.99

[Click here](#)



Electric Travel Toothbrush

£15.99 / €29.99 / \$19.99

[Click here](#)



Vago Portable Luggage Compressor

£63.49 / €69.99 / \$59.18

[Click here](#)



BEFORE



AFTER



Travel Extension lead 6 USB ports 3 Way Universal Power Socket Outlets

£15.85 / €24.99 / \$16.99

[Click here](#)



Cowin SE7 Active Noise Cancelling Bluetooth Headphones

£109.99 / €109.99 / \$119.99

[Click here](#)



Solar Power portable power bank

£37.99 / €49.99 / \$39.99

[Click here](#)



Daddy Loves Golf Print

£28 / €31 / \$34

[Click here](#)



Senio Hexagonal Stool Bottle Green

£99 / €111 / \$122

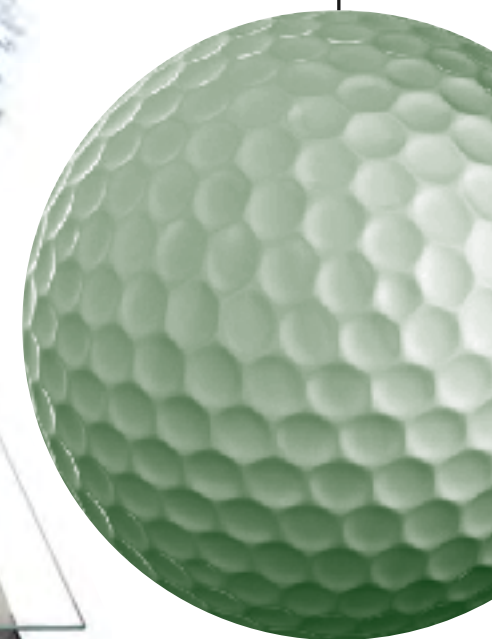
[Click here](#)



Cappa E Spada - Antique Styled Distressed World Map Coffee Table

£795 / €893 / \$977

[Click here](#)



Zuiver Marble Time Wall Clock

£69 / €78 / \$85

[Click here](#)



Nkuku - Batwa Mango Wood Round Decorative Vase

£60 / €67 / \$74

[Click here](#)



Aula Coffee Table, Brushed Copper and Green Glass

£299 / €336 / \$367

[Click here](#)



Umbra Prisma Mirror - Copper

£80 / €90 / \$98

[Click here](#)



Christmas gift ideas
from our friends at
Furnishful.co.uk

Qeeboo - Mexico Skull Stool/Side Table - Silver

£1000 / €1123 / \$1229

[Click here](#)



IMPRESSIONS FROM CALIFORNIA



Left: Classic Chevrolet at Fisherman's Wharf, San Francisco
Below: F-Line streetcar in San Francisco



Left: Segway tour at Fisherman's Wharf, San Francisco



Left: Riding a quad bike on Oceano Dunes, Pismo Beach
Right: Old locomotive at Central Pacific Rail Road Depot, Sacramento



left: Ford Mustang on 17 Mile Drive, Monterey
Far Left: Getting around in San Francisco

Below: Sea lions in Morro Bay
Right: Venice Beach boardwalk



Above: Santa
Barbara marina
Right: Fishing boat
in Santa Cruz



Above: Surfer catching a
Pacific roller off Santa Cruz

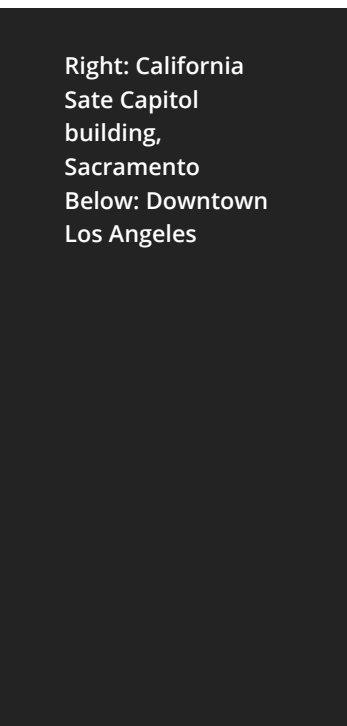


Left: Lone pine
on 17 Mile Drive,
Monterey

IMPRESSIONS FROM CALIFORNIA



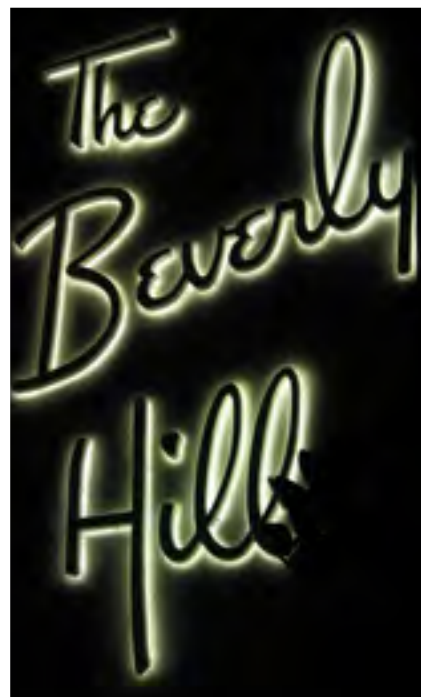
Left: El Capitan,
Yosemite
National Park
Right: Zabriskie
Point, Death
Valley



Right: California
State Capitol
building,
Sacramento
Below: Downtown
Los Angeles



Above: Heat warning
sign at Zabriskie
Point, Death Valley
Right: The Beverly
Hills hotel sign



Above: Star Wars Galaxy's Edge at Disneyland, Anaheim
Right: Grey Wolf Winery vineyard, Paso Robles



IMPRESSIONS FROM CALIFORNIA

See more of Peter
Ellegard's work on
Instagram
[@peterellegard](#) or
[peterellegard.co.uk](#)

SIMPLY SUPERIOR

Exploring the Past, Experiencing the Present

Sault Ste Marie
at sunset

Billy Wilson

BY JANE FINN, PHOTOGRAPHY BY DAVID FINN

In our technologically-driven society, we're always on, or at least we pretend to be, so when you need a 'break from life', I can't think of a better place to reconnect with yourself and nature than Sault Ste Marie. Nestled along the banks of the St. Mary's River, this friendly and diverse community of 73,000 people is the perfect gateway to Lake Superior – the world's largest freshwater lake in area – and the pristine rugged wilderness that surrounds it.

After we dropping our bags at our hotel, an easy stroll along the boardwalk found us crossing the narrow bridge atop the locks to Whitefish Island also known as Bawaating. Legend has it that when the Chiefs of all the First Nations needed to find a meeting place to gather without boundaries, a place to exchange information and ideologies, trade goods, and socialise, they sent out a crane to find the perfect gathering space. He led them to Bawaating, the place where the fast water flows and he chose well. Hundreds of years later, it remains a place with no borders except those created by Mother Earth, a place to align mind, body, spirit and heal.

Whitefish Island might be small in size, but it's a naturalist's paradise set within an urban landscape, a tranquil place where we found ourselves slowing down to the speed of life. For the next couple of hours, we wandered the trails bird watching and observing industrious beavers tending to one of the three dams that are essential to maintaining the island's delicate ecosystem, ducks settling their broods and a fox on the prowl for his dinner.

As the sun began to descend, we realized we were famished and quickly made our way to the downtown core where a group of passionate and innovative young entrepreneurs, chefs and restaurateurs are celebrating their Northern →

Right: One of several trails that lead through sacred land to Agawa Rock.

Far right: Traversing the rocky ledge nestled against Superior's shore to view the pictographs.



Hundreds of years later, it remains a place with no borders except those created by Mother Earth



“A sacred place
for the Ojibway
people and anyone
seeking the spiritual
solitude of its
flowing waters”

roots and serving up local fare with local flair.

At J. Caroline’s we indulged ourselves with an Anvil Red Ale from craft brewer Outspoken and nibbled on tasty tempura fish tacos that left us wanting more, but we were destined for the Whisky Barrel Pub. On Thursday evenings local musicians congregate here for a jam session that packs the house, but I have to admit that the Whisky Barrel’s other appeal was the opportunity to quench our thirst with a flight of five premium Whiskeys from their extensive collection accompanied by the best lamb Shepherd’s Pie I’ve ever tasted!

LAKE SUPERIOR

Despite having had way too much fun the previous evening, we awoke to a cloudless sky and promptly headed for the road to get our first glimpse of Lake Superior along Highway 17. Around every bend we caught spectacular glimpses of the crystalline waters of Lake Superior that appeared to be more like an ocean than a lake.

Our first stop was Chippewa Falls, which marks the midway point on the Trans Canada Highway, a sacred place for the Ojibway people and anyone seeking the spiritual solitude of its flowing waters. After meandering along a few trails, where we spotted evidence that a moose had been there earlier that morning but was now proving to be elusive, we knew that more sustenance was required and we stopped at the Voyageur’s General Store for one of their world-renowned apple fritters. Honestly

one fritter would have fed a family of four but somehow, I managed to devour all of mine before resuming our exploration of the coastal road!

For the next several hours, we hiked along the edge of granite cliffs, searched out the easels that marked the vistas that had inspired the Group of Seven artists, waded into caves and simply let our minds wander and our bodies enjoy the warmth of the summer sun. With cameras in hand, we climbed the lookout at Alona Bay, and then took the almost hidden path to the right about 100 meters down to the shore to dip our toes in the cold water.

It was a calm day but as we gazed across the massive expanse of blue we were reminded how unpredictable the weather can be. Someone in the group mentioned the number of shipwrecks in these parts and we took time to honour the twenty-nine souls who were lost one fateful night when the Edmund Fitzgerald floundered and sank to the bottom of Whitefish Bay. It was a tragedy that inspired Gordon Lightfoot to pen the lyrics to a song that honours the bravery of the ships’ sailors and reminds us of the power of nature.

On the advice of a fellow traveller, we then found our way to Katherine Cove, an idyllic spot where the locals go to picnic and relax. Truly a carefree way to while away a few hours in harmony with the environment, but the highlight of the day was still to come.

Our last stop was Lake Superior Provincial Park where we scrambled around massive →



Above: Step out of your car and you can hear the roar of Chippewa Falls. It’s a short hike and easy climb to the top of the falls.



Left: Feel the power of Superior as the waves roll across the rocky shore.



Middle: If you need to stock up on supplies, plan on visiting the Voyageur General Store early in the day to snag one of their coveted apple fritters.



Right: Many sandy beaches and coves are deserted, yours to enjoy on your time, at your pace.

Below: The Agawa Canyon Tour Train transports visitors along a 114 mile track to the floor of the canyon to explore the natural wonders of a boreal forest.



Above: Pictograph honouring Misshepezhiew - the Great Lynx revered as the Spirit of the Waters.

boulders and traversed a series of narrow chasms to make our way to a rocky ledge that jutted out over the lake that would lead us to Agawa Rock and Ontario’s largest collection of pictographs. This sacred site may date back more than 400 years and while the depictions of a canoe, a bear and a horse are interesting, it’s the magical, mythical Misshepezhiew that will capture your imagination. It is said that this Great Lynx has the power to calm the lake or bring on the wind and storms by simply slashing his tail, which is why we waited until late in the day to pay homage to the Spirit of the Waters.

The following morning with a storm looming

on the horizon, common sense told us that this was a good day to do some indoor exploring so we made our way to Algoma University to experience the past and discover what lies ahead on Canada’s road to Truth and Reconciliation. As we pulled into the circular driveway at Shingwauk, the building was certainly impressive, but it was only when I walked through the doors and began the tour that I understood how intimidating it must have been for a five or six-year-old arriving alone to a place they would call ‘home’ for a decade or more.

Until 1970 Shingwauk Hall was a residential school where Indigenous children were sent

for acculturalisation. Once inside they were expected to disavow their language, their traditions and culture, a wrong that Canadians are trying to make right. Today, Shingwauk Hall is the main building on campus dedicated to furthering Anishinaabe education and preserving knowledge. Exploring Indigenous culture is a unique way of seeing the world through a different lens. Aboriginal stories have a quality that inspires the soul. Connecting to history, ancestry and tradition helps us all truly appreciate the beauty and the diversity of the communities we visit, wherever we travel.

Shingwauk has been transformed into a place for gathering, learning, sharing, reconnecting →

“It is said that this Great Lynx has the power to calm the lake or bring on the wind and storms by simply slashing his tail”



Above: Shingwauk is leading the country with their innovative approach that promotes understanding while preserving Anishinaabe language, knowledge and culture. Middle: An iconic lone White Pine that figured prominently in Tom Thompson's paintings. Bottom: As darkness falls, you can't help but feel totally at peace with yourself and your surroundings.

"I had time to reflect on the importance of making time to unplug and enjoy the simple pleasure of just being present"

and healing and with the opening of the new National Chief's Library later this year, Chief Shingwauk's vision of a 'teaching wigwam' will finally be realised.

The next day, we were off to 'ride the rails' for a 114-mile journey that would take us deep into the boreal forest to the Agawa Canyon. We boarded the tour train just before 8 am, and those in the know quickly fanned out to claim the window seats on the right, knowing this is where they would get the best views. In a matter of minutes, we were headed out of the city and rolling past a replica of the red box rail car that had served as the living quarters for the Group of Seven, who spent several months from 1917 to 1918 in the canyon capturing the images in their sketchbooks that would bring Canadian art to the world stage. Shortly after that we lost cell service, which was fine by me because it allowed me to kick back and be fully present in the moment.

Upon disembarking, I headed straight for the 'Lookout', – an observation platform situated 76 metres (250 feet) above the canyon floor. Three hundred and twenty-one stairs later, and more than a little out of breath, I felt like I had climbed a mountain but the peace and serenity I

found at the top was worth the effort. The view was spectacular and I have to admit that I tarried longer than I intended, so I had to do a bit of power walking to make it to the Black Beaver, Otter Creek and Bridal Veil Falls before the train whistle sounded, reminding me that it was time to leave.

On the return trip under the tutelage of Eileen Halfpenny, a resident watercolour artist, I feverishly tried to imitate Lawren Harris' painting of Isolation Peak. Much to my chagrin, this endeavour confirmed that while I may have an artist's soul, I do not have an artist's touch. No worries, I'll settle for taking photographs of the lone white pines that figured so predominantly into Tom Thompson's work.

On our flight back as I watched the forests disappear and the city lights of metropolitan Toronto come into view, I had time to reflect on the importance of making time to unplug and enjoy the simple pleasure of just being present and aware of your surroundings and to make new friends and explore new places. Perhaps I can delay the inevitable return to the hustle and bustle of everyday life by not turning on my cell phone? I'll let you know how that goes!

HOW TO GET THERE:

Sault Ste Marie is a 7-hour train trip or 1.5-hour flight from Toronto

WHERE TO STAY:

Delta Hotels Sault Ste Marie Waterfront

208 St. Mary's River Drive
Sault Ste Marie ON P6A 5V4

T: +1-705-949-0611

W: marriott.com/hotels

WHERE TO EAT:

J. Caroline's

648 Queen st East
Sault Ste Marie ON P6A 2A4

T: +1-705-575-0199

W: jcarolines.ca

The Voyageur's Lodge and Cookhouse

Hwy 17 North (ON-17)
Batchawana Bay, ON P0S 1A0

T: 1-75-882-2504

W: voyageurslodge.ca

The Whisky Barrel Pub

113 Gore Street
Sault Ste Marie ON P6A 1L9

T: +1-705-450-1096

[Facebook.com/TheWhiskyBarrelPub](https://www.facebook.com/TheWhiskyBarrelPub)

WHAT TO DO:

Shingwauk & the National Chief's Library

7 Shingwauk Street
Garden River ON P6A 7B2

T: +1-705-942-5069

W: shingwauku.ca

Agawa Tour Train

129 Bay Street, P.O. Box 130
Sault Ste Marie ON P6A 6Y2

T: +1-705-946-7300

W: agawatrain.com

FOOTSTEPS OF LEGENDS

As the euphoria of the 145th Open Championship starts to settle James Mason traces the footsteps of some of the games modern day legends at Royal Portrush and samples some of the other wonderful golf courses you can play in Northern Ireland.



I wrote these course reviews while on my visit two months before the first tee shot was struck at this year's Open Championship, but now you have all watched Shane Lowry lift that claret jug and become Champion Golfer of the Year. I am sure you can't wait to get out here and test your skills on one of the world's great links courses, here are a few more reviews of courses in the area to whet your appetite and help you put together the perfect itinerary for your visit.

BELVOIR PARK GOLF CLUB

First on our itinerary is Belvoir GC, which is pronounced locally as Beaver. We pull into the car park and head into the beautiful new clubhouse that sits behind the 9th and 18th greens and the 10th tee and going by the way the green keeper has cut the 10th fairway in diamonds he certainly takes pride in his work.

The dew is still on the grass and the sun is slowly rising and casting some wonderful shadows over the course. The 1st can be drivable but you have to be very accurate or you could find the front right bunker.

The 2nd brings the first elevated tee and you can't help but want to hit the perfect drive into that diamond cut fairway. The second shot to the 3rd hole is played uphill to a raised green that looks fantastic with its two bunkers cut into the hill to protect it. The 4th brings up the first of the par 3s which is played from an elevated tee to a green that is surrounded by bunkers and as my pushed tee shot lands in the right-hand trap I have to laugh at myself.

The course is going through an updating programme at the moment so you will notice two different types of sand. The new sand is whiter and with the sun bouncing off of it today and surrounded by the trees and greenery the course will certainly look even more impressive than it already does.

The other par 3 on the front nine is at the 8th and its stone bridge and the four white-sanded bunkers protecting the raised green makes this hole visually impressive. The front nine comes to a close with a short par 5 of only 481-yards from the back tees and gives you a chance to end the front nine on a high and with the back nine opening up with another short par 5, these two holes offer you a great chance to gain any dropped shots back.

The 11th brings up the first of the par 3s on



THE DOGLEG RIGHT 18TH BRINGS YOU BACK TO THE CLUBHOUSE AND IS A FITTING FINALE TO THIS CLASSIC HARRY COLT DESIGNED COURSE. I AM SURE HARRY WOULD LOVE THE WAY THE COURSE HAS NOT ONLY STOOD THE TEST OF TIME BUT HE WOULD ALSO BE HAPPY WITH THE IMPROVEMENTS THAT THE COURSE IS NOW GOING THROUGH.

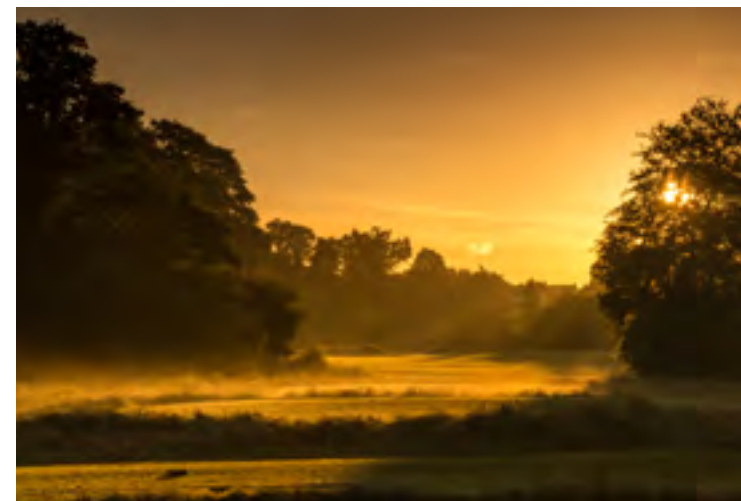
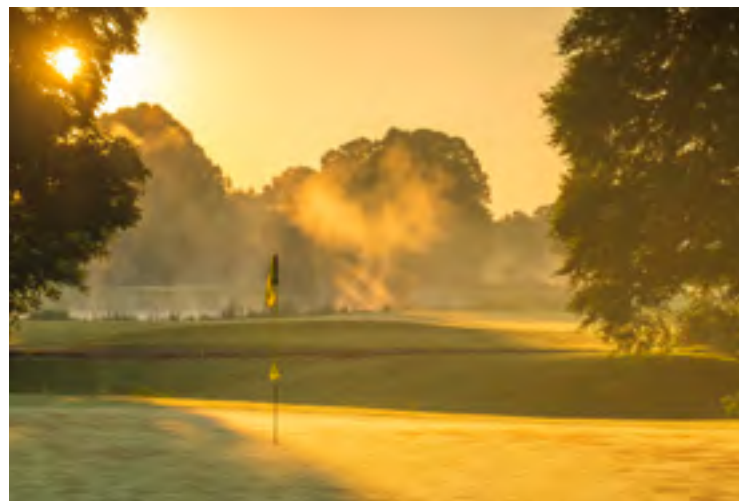
the back nine, but for me the par 3 14th is the pick of the two, played again from an elevated tee to a raised green protected by five bunkers four short, two left and right and one back left.

The dogleg right 18th brings you back to the clubhouse and is a fitting finale to this classic Harry Colt designed course. I am sure Harry would love the way the course has not only stood the test of time but he would also be happy with the improvements that the course is now going through. →

Top right: The par 3, 8th hole. Top left: The balcony looking over the 18th green. Right: Looking down the 10th fairway.

COURSE VIDEO





GALGORM CASTLE

I played this course several years ago in the annual Northern Ireland Open ProAm and it's a course that matures well with age, unfortunately the weather today isn't as nice as yesterday but I crash my driver down the fairway on the 437-yard dogleg right opening hole. It is certainly a testing opener for both amateurs and professionals. The 2nd is another dogleg right played to a long thin green.

Water comes into play on the next three holes, but is more apparent on the 4th where you play over the water with your tee shot with water running down both sides of the fairway and comes into play again protecting the front of the green as you play your approach shot. It may only be 323-yards but it can certainly ruin a scorecard if you take it too lightly.

The 5th is the first of the par 3s on the front nine and again is played over a stream to a

green that is protected by two bunkers. The other par 3 on this nine comes at the 7th and again water comes into play and anything short and right will be wet, the stonewall behind the pond gives the hole a visual appeal.

The front nine comes to a close with the 513-yard par 5 which is certainly reachable in two because I am standing over an eagle putt that I leave short by two rolls and like Belvoir Park yesterday with the back nine opening up

with a par 5 that I again have an eagle putt on you can certainly make up any dropped shots on these holes. Oh yes I missed that eagle putt and another one on the 18th which is another reachable par 5.

A great start to the day and after a wonderful lunch in the Castle Kitchen restaurant. I highly recommend you try their cheese burger we are onto our coach and off to Portstewart to play our second 18 of the day. →



Top left: Mist on the water to the 3rd green. Top middle: The 4th green at sunrise. Top right: Looking down the 15th fairway at sunrise. Left: Looking down the 18th fairway.

COURSE
VIDEO

WATER COMES INTO PLAY AND ANYTHING SHORT AND RIGHT WILL BE WET, THE STONEWALL BEHIND THE POND GIVES THE HOLE A VISUAL APPEAL.

PORTSTEWART GOLF CLUB

My excitement levels start to peak as we pull into the car park at Portstewart and I know exactly why as I have played this course before. Home to the 2017 Irish Open and I can guarantee when every professional golfer walked on to the first tee for the first time just said wow, it is such an impressive view it's hard not to be taken in.

With the ocean on your right and the fairway some 60-feet below you it certainly is one of the best opening holes anywhere on the planet. The course then starts to move through the dunes with the second hole played from an elevated tee and from the fairway you play up to a very thin raised green that sits in between two dunes, which again gives you another elevated tee shot for the first of the par 3s on the front nine.

Make sure you go and have a look at the championship tee on the 4th hole – or check out the video with this review – it measures 583-yards and sits high up in the dunes with the fairway stretching out below you with the river Bann as a backdrop, it's an impressive hole. The course continues to meander through the dunes where Mother Nature and the dunes dictate the shape of each hole and the 6th brings

WITH THE OCEAN ON YOUR RIGHT AND THE FAIRWAY SOME 60- FEET BELOW YOU IT CERTAINLY IS ONE OF THE BEST OPENING HOLES ANYWHERE ON THE PLANET.

Right: The stunning view from the back 4th tee. Bottom right: Aerial view of Portstewart.

Bottom top right: Looking over to the 3rd green. Bottom right: Aerial view of the beach to the right of the 1st tee.

COURSE VIDEO



up the other par 3 on this nine and is played to a green that looks like an upturned saucer with two pot bunkers protecting the front.

Be careful of the 8th as it's a ninety-degree left turn, for the longer hitters it is certainly drivable but if you are off by an inch your ball will get caught up in the dunes and the chances of finding it are slim, it's a real risk and reward hole.

The back nine takes you down towards the River Bann where the course starts to come out of the dunes, this is the original Willie Park Jr design. Des Giffin added seven new holes when the golf club purchased the dunes known as the Thistly Hollow in 1986 and the new Strand course opened for play in 1992.

Depending on the wind the last three holes can be a real test and are potential card wreckers especially the 17th with its raised green anything short, long or wide will end up back down the sloop and at 436-yards into the wind it will take two of your best strikes to not only reach the green but keep your ball on it. →



ROYAL PORTRUSH

The Open at Portrush was the quickest sell out in the history of the championship and when new tickets were released they all got snapped up within an hour and all practice days were sold out. The excitement here is palpable and I can feel it as we pull through the gate, one of the first things I noticed on the drive in was the amount of classy little chalets that have been built around the area with their own barbeque decks they are certainly banking on Portrush being back on The Open rota permanently.

The first few holes have not changed with the opening hole being played uphill to a very tricky green. The first of the two par 3s comes at the 3rd hole, but it's the 6th – named Harry Colt after the original designer – that will test the pros, anything short will see the ball rolling off into thick grass from this raised green.

Just stepping back one hole will be a risk and reward hole for the pros. Standing on the tee I am aiming at the far bunker on the left of the fairway, but I am sure a lot of the professionals will be going for the green. As I walk down the fairway I can see the R&A are growing the grass just short of the green on that line and it is already looking thick and should make

Right: The 5th green and 6th tee.
Below: One of the many undulating fairways at Royal Portrush.

COURSE VIDEO 



interesting viewing.

The 7th is one of the new holes that have been put in for The Open; this work was carried out by golf architect Martin Ebert of Mackenzie and Ebert. There are five new greens, eight new tee boxes, 10 new bunkers and two new holes, the 7th and 8th on land

which was once part of the Valley course.

Standing on the elevated tee of the uphill par-5 7th named Curran Point you would think this hole was part of the original Harry Colt design and that is down to the great work by Martin and the team. Unfortunately my tee shot finds the rather large bunker on the right of the →



JOURNEY PLANNER

GETTING THERE:

All major airlines to Belfast
International Airport or George Best
Belfast City Airport
W: belfastairport.com
W: belfastcityairport.com

WHERE TO STAY

Ten Square
W: tensquare.co.uk
T: +44 28 9024 1001

Bushmills Inn
W: bushmillsinn.com
T: +44 28 2073 3000

WHERE TO EAT

Café Parisien
W: cafeparisienbelfast.com
T: +44 28 9590 4338

Castle Kitchen & Bar
W: galgorm.com/castle-kitchen-bar
T: +44 28 2588 1001

Jospers Steakhouse
W: tensquare.co.uk/Bar-Dining/Jospers
T: +44 28 9024 1001

THINGS TO DO

Game of Thrones
W: titanicexhibitioncentre.com
T: +44 28 9076 6398

Titanic Belfast
W: titanicbelfast.com
T: +44 28 9076 6386



fairway and I take two to get out.

The new 8th hole runs in the opposite direction and has been named Dunluce. Be warned those two bunkers in the right side of fairway are reachable as I have just found out. The 9th brings you to the renowned halfway hut and after some much-needed refreshments we start the back nine. I love the 10th hole with the thin green nestled in the dune.

The first of the par 3s on the back nine comes at the 13th and is played from an elevated tee and is surrounded by five bunkers. The course closes with a pair of classic holes: the 17th known as Purgatory is 405-yards from the tournament tees but plays downhill and will be reachable for the pros and with only two bunkers protecting the green we could see some dramatic finishes.

The course closes with a dogleg right with some very deep cross-bunkers sitting in the fairway, anything close to the left of the green will run away and down into a collection area. I am playing the course today with the stands all in place and walking down the fairway gives me goose bumps and they are empty, but I can imagine the roars as the champion golfer of the year takes that same walk in July and he will

**STANDING ON THE
ELEVATED TEE OF THE
UPHILL PAR-5 7TH
NAMED CURRAN POINT
YOU WOULD THINK
THIS HOLE WAS PART OF
THE ORIGINAL HARRY
COLT DESIGN AND THAT
IS DOWN TO THE GREAT
WORK BY MARTIN AND
THE TEAM**

thoroughly deserve all those accolades that come his way as this course has tested every part of my golf game today.

Footnote: Well Shane Lowry took that walk and what a reception he received. It was certainly fitting that the first time back here for over 70-years the Champion golfer of the year should be an Irishman. What I was surprised about was only one golfer – Lucas Glover – drove the 17th green; my playing partner and myself did although from the men's back tees. Maybe the R&A should move the tee up on a couple of days to add even more drama!

It has been a wonderful few days in Ireland, the golf courses are magnificent, but the people, the views and of course the gastronomy, make this a must visit destination for golfers from around the world.

Top: The 16th green. Middle: 11th green sitting in the dunes. Left: The new 7th hole and 8th green.

JOURNEY PLANNER

WHERE TO PLAY

Belvoir Park GC

W: belvoirparkgolfclub.com

T: +44 28 9049 1693

Galgorm Castle

W: galgormcastle.com

T: +44 28 2564 6161

Portstewart GC

W: portstewartgc.co.uk

T: +44 28 7083 2015

Royal Portrush GC

W: royalportrushgolfclub.com

T: +44 28 7082 2311



SEA TO GREEN

Imagine only seeing your golf clubs on the 1st tee on some of Ireland and Scotland's iconic golf courses and every night of your tour being catered for by a team of chefs, throw in optional kayaking, cycling, hikes, bird, whale and dolphin watching and of course a hot tub, sauna, steam room, gym and professional masseuses, you then have the perfect holiday mix for golfers and non-golfers

MACHRIHANISH DUNES

It's day one of the Scotland and Ireland golf cruise and we have a choice between Machrihanish and Machrihanish Dunes. Having played both courses previously I opted for the Dunes as it is my preference out of the two. However I understand the pull of history and the Old Tom Morris design of Machrihanish.

I love the Dunes, not every club is environmentally aware and its ethos of not using chemicals and minimum watering policy. As I step onto the first tee I realise they have changed the opening hole, it's now a gentle dogleg left, but there are four fairway bunkers waiting for you one on the dogleg and three on the right waiting for anything long. The green is your first taste of how undulating the putting surfaces on this course are, it runs right to left downhill with more twist and turns than a rollercoaster, but you're on this cruise to have fun and enjoy some fantastic golf courses, so take the breaks or unfortunate bounces in your stride and soak up your surroundings.

Today you will be aiming at marker posts, hitting to hidden greens and fairways, but most importantly you will love every minute of the experience. For most people on this cruise it will be their first links golf experience, it's not too cold and more importantly it's not raining.

The 4th brings up a driveable par 4; a member of our group has a caddy who recommends we

Right: Sunset over the 2nd green.

Below right: Landing area on the dogleg left 1st.
Below left: 11th green.

COURSE VIDEO



THE GREEN IS YOUR FIRST TASTE OF HOW UNDULATING THE PUTTING SURFACES ON THIS COURSE ARE, IT RUNS RIGHT TO LEFT DOWNHILL WITH MORE TWIST AND TURNS THAN A ROLLERCOASTER



aim just left of the marker post, I am just short of the green but the beaming faces on my playing partners as the green comes into view made me smile, I felt that way the first time I saw it. Sat nestled in between dunes its long and skinny with a surface that resembles bubble wrap!

The 5th and 6th bring up back-to-back par 3s with some wonderful views of the ocean, walking away with two pars here will see you taking a few drinks off your playing partners. As I make my way around the course and play each shot it reminds me of why I love this game so much.

The 15th brings you to the sea and two holes that run along the shoreline, this is my →



Left: Looking back down the 13th to Glashedy Rock (Gláis-éidigh).

favourite part of the course and standing on the back tee watching the waves crash on the deserted sandy beach reinforces my decision to choose the Dunes; this One Ocean Expedition cruise could not have gotten off to a better start.

BALLYLIFFIN GOLF CLUB

It's day two of our golf cruise and we have moved back to the North of Ireland and Ballyliffin Golf Club home to the 2018 Irish Open, today we are playing the Glashedy course. I have played both courses here before and was looking forward to playing sans rain on a dry course. The sun is out and with a little breeze, it's perfect links golfing weather.

Apparently, when course architect Pat Ruddy was flying over this piece of land in a helicopter he spotted it and immediately decided he wanted to build a golf course here and from my first visit I know he has done a magnificent job.

The course is in fantastic condition and after putting my drive in the middle of the fairway I am off to a good start, the ball is sitting perfectly on the tightly knit grass, I under club for my approach shot to the green that sits nestled in the dunes leaving myself a long putt, but the greens are running fast and true a good first putt sees me walking off with par.

As I video most of the courses so you get a virtual tour of the course while reading the review, I normally play from the back tees. On this course many of them are elevated and offer some wonderful views as well as adding to the challenge and aesthetic of each hole and the 2nd hole is one of those where the fairway sits below you and moves through the dunes.

The 5th hole brings up the first par 3, but it's the 7th hole that takes all the accolades played from on top of one of the dunes to the green below that has water to the right of the green, I

Ballyliffin GC
Right: Elevated tee at the 3rd hole.
Right below: Pot bunkers at the 15th.

Askernish GC
Far right:
Undulations on the 16th green. Far right below: 17th green.

COURSE
VIDEO



could tell my playing partners and other member of our cruise were impressed by the number of cameras that appeared.

While the 7th may take all the accolades for me the 14th is the pick of the shorter holes and with the wind now in our faces it's a solid 3-iron from the back tee today, which again is elevated. The hole plays downhill anything right, left or long will roll down to collection areas, anything short you not only have to contend with the run-off but going into the large pot bunker that protects the front of the green.

The course closes with a dogleg right with a pot bunker waiting on the corner for the foolhardy who try to cut too much off the dogleg, so my second shot from the pot bunker on the corner of the dogleg...

It's a great finishing hole and one that Russell Knox enjoyed playing so much he played it again in a play-off against Ryan Fox holing a monster putt for birdie from nearly the exact same position that he holed the one he had in regulation play. Unfortunately for me I holed out for a six after taking three to get out of that bunker!

ASKERNISH GOLF CLUB

The Isle of South Uist sees me teeing up at what is known as the lost Old Tom Morris course, the story goes that Tom was commissioned 1891 to create a course at the request of the wealthy →

land owner, Lady Cathcart, so that she could impress her high society guests. Old Tom created an 18-hole course that was maintained until the early 1920s when the demand for golf declined. The land was kept as 12 holes, and then went to 9 holes, and then 9 holes with 18 tees.

In 2005 a group of locals decided that they wanted the original course back and with the help from some of the golf industry's biggest names, restored this 'lost' course, which opened for play in 2008.

I am also playing in a 5-club challenge and have chosen my hybrid, 5-iron, 7-iron, pitching wedge and 54° degree wedge which I will be putting with. Now this is a pure golf links in the total sense of the expression, there are no chemicals used and the greens are mown surfaces and there are only four bunkers on the entire course. Numerous rabbit and other creature holes not only frequent the rough but also the fairways. It is like stepping back in time to when Old Tom was playing himself and that is the beauty of this Askernish.

The holes along the sea from the 6th to the 12th are stunning; I loved every minute of playing the course, there is no point in me running through the holes for you, I just want to get across to you how much fun and how privileged I felt to play here when I walked off.

From the first shot to the last this was golf how it was played before manicured fairways, closely mown greens and watering systems, if these greens run at 13-14 on the steep metre they would bring professional golfers to their knees in



Above: The stunning 7th at Askernish GC. Far right: Skara Brae Village. Right. Standing Stones of Stenness. Below: Panaramic view of The Ring of Brodgar.

frustration with all the undulations. Every golfer on this cruise walked back to the clubhouse each with beaming ear to ear grins, eulogising about what a great course this is and how much fun they had, need I say more.

DAY FOUR

We docked just off the Orkney Islands and I could have played golf today but have decided to head out with the adventurer's group and go on a bike ride around the Island to visit the Neolithic Skara Brae village, then onto the Orkney brewery. A pit stop for refreshments and then we continued onto the Ring of Brodgar – for the uninitiated this is a Neolithic henge and stone circle – and our final stop was the Standing Stones of Stenness. After our 23-miles of biking we headed back to the port where we landed in the zodiacs and enjoyed a well-deserved pint or three at the Ferry Inn before heading back to the ship.

I am so glad that I took time out of playing golf to take a look back in time, it was awe inspiring to see the ingenuity of the people in those times, not only to build these fantastic stone dwellings, but to gaze at the majesty of the henge circle and standing stones. They have not only withstood all that mother nature could throw at them but they have also withstood mankind – well apart from one farmer that had more dynamite than brains because he didn't like people trespassing on his land in Stenness to see them, he obviously missed that part in the Lord's prayer. →



ROYAL DORNOCH

The last two days bring up a choice of courses today it is Castle Stuart or Royal Dornoch and it is a tough choice having played both, but as I have played Castle Stuart several times and have only played twice at Royal Dornoch I am on the coach to what Tom Watson once described as ‘The most fun I ever had playing golf’.

I am sure this course would be on the Open Championship rota if the access to the course wasn’t such a challenge, not only for spectators but the paraphernalia that now surrounds a modern-day golf tournament. Standing on the tee looking down the 1st hole Old Tom Morris who extended the original 9-hole course to 18-holes certainly wanted to lull you into a false sense of security.

The only problem is its yet another beautiful day in Scotland and the course’s main defence is the wind and there is hardly any, I crash my driver down the middle and a gap wedge to four foot seems me open up with a birdie. Now the par 3, 2nd hole I know from experience can wreck your scorecard before you have even gotten underway and last time I was here I took eight! Be warned miss the green at your peril, you are better off being short than missing the green left, right or back. It’s a plateau green and if you don’t get your pitch shot up on to the green you will see the ball coming back to your feet, probably several times if you don’t learn the lesson quickly. A solid 6-iron sees me holing out for par.

As you make your way to the 3rd green the course opens out and the rugged views of the Dornoch Firth coast come into view, where caved rock formations give way to a perfect sandy beach that stretches for miles in both directions. The yellow gorse bush flowers that surround the fairways are starting to bloom and my senses are struggling to soak in the sheer majesty of the view.

The course continues out from the clubhouse like a true links course should and its one great golf hole after another, hit the fairway and you can make a good score, miss it and the gorse will not only eat your ball but will have the shaft of your club and wrists as well – my advice is to take your punishment and wedge out. So it’s a shame that I didn’t heed my own advice after putting my second shot into one of the two pot bunkers that protect the front of the green at the 7th.

I am going to blame the view from the tee

THE YELLOW GORSE BUSH FLOWERS THAT SURROUND THE FAIRWAYS ARE STARTING TO BLOOM AND MY SENSES ARE STRUGGLING TO SOAK IN THE SHEER MAJESTY OF THE VIEW.

Top right: Bunkers at the 1st hole.

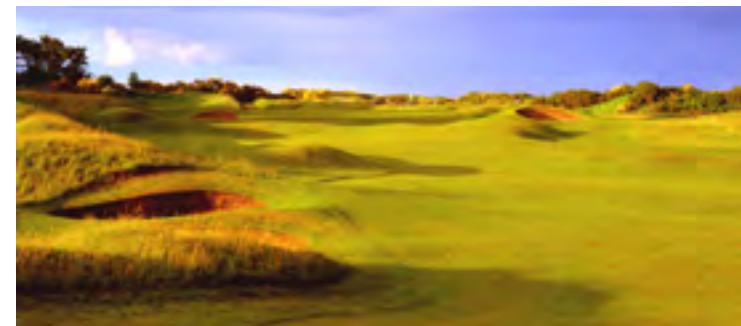
Right: The stunning view from the 7th tee. Below: Raised green at the par 3, 2nd

COURSE VIDEO

at the 7th for that lapse in concentration – and I certainly recommend you get your camera ready and take a walk to the back tee, it’s the perfect place for a group photo or a selfie with the stunning view out across the course with the Dornoch Firth and beach as a backdrop – but four shots to get out of the bunker sees me going from 2 under to 2 over!

Around 1946 George Duncan added six new holes from the 6th to the 11th with the original holes being incorporated into the Struie Course. The par 3, 10th hole with its halfway hut sees you heading back towards the clubhouse with the sea now on your left. It’s a welcome break and helps me to recoup and go again.

As I reach the 18th green after smashing a drive and 3-iron into the wind that had picked up, not even my missed birdie chance that I managed to turned into a 3-putt bogey could put a dampener on the day. The wind did pick up but there was no rain, unlike when Tom Watson played here when he made that statement, but that was certainly a lot of fun on one of golf’s most iconic golf courses. →



CRUDEN BAY

Today was a choice between Royal Aberdeen and Cruden Bay; I had already played Royal Aberdeen so it was a no brainer to tick Cruden Bay off my list and as the coach pulls up to drop us off I am so glad I did. The view over the course is breathtaking but it's the backdrop of the Bay of Cruden and the pure sandy beach and the old castle ruins that turns a breath-taking view into a truly magnificent view.

After checking in at the pro shop, and a chat with Hamish the starter who gave us a complimentary bottle of whiskey, I slam my tee shot down the middle, so far so good I think to myself as my second shot heads towards the flag

but one bounce later and its heading down the bank leaving me a tricky chip shot, this was to become the theme of the day.

The 2nd hole is played to an elevated green and you guessed it, I went over the back and down the other side! The 3rd is a driveable par 4 that uses a traffic light system as it's a blind shot through the dunes – if you are a longer hitter I would use 3-wood here as I put my ball through the green but chipped and puttred for a birdie.

Next up is a stunning par three, played again to a raised green, my tee shot is a foot short of the putting surface and I have to smile as my ball gently rolls down the hill. Cruden Bay produces stunning hole after stunning hole and when you

thought it couldn't get any better you walk up to the 9th tee and everyone has their cameras out.

As I stand and survey the course from this magnificent vantage point looking out over the course and the deserted beach that wouldn't look out of place in the Caribbean, I not only know I made the right choice in playing this course today, but it has shot straight into the Top 10 courses I have ever played for visual appeal.

Walking off the 18th green I must have had the biggest smile on my face, the Ocean One Expedition cruise seems to have surpassed its self each day and Cruden Bay was a fitting finale to what has been a golfers dream cruise.

Top left: Burn protecting the 11th green. Top right: Bridge at the 6th hole. Bottom: 14th green and 15th tee by the beach and looking back down the course.



CRUDEN BAY PRODUCES STUNNING HOLE AFTER STUNNING HOLE AND WHEN YOU THOUGHT IT COULDN'T GET ANY BETTER YOU WALK UP TO THE 9TH TEE



JOURNEY PLANNER

WHERE TO GET THERE

British Airways to Dublin

W: ba.com

T: +44 (0) 344 493 0787

HOW TO BOOK

One Ocean Expeditions

Ireland and Scotland Golf Expedition

W: oneoceanexpeditions.com

WHERE TO STAY

Spencer Hotel Dublin City

W: thespencerhotel.com

T: +353 1 433 8800

WHERE TO PLAY

Machrihanish Dunes

W: machrihanishdunes.com

T: +44 (0) 1586 810 000

Machrihanish

W: machgolf.com

T: +44 (0) 1586 810213

Ballyliffin Golf Club

W: ballyliffingolfclub.com

T: +353 (0) 74 937 6119

Askernish Golf Club

W: askernishgolfclub.com

T: + 44 (0) 1878 700628

Royal Dornoch

W: royaldornoch.com

T: royaldornoch.com

Castle Stuart Golf Links

W: castlestuartgolf.com

T: +44 (0) 1463 796111

Cruden Bay Golf Club

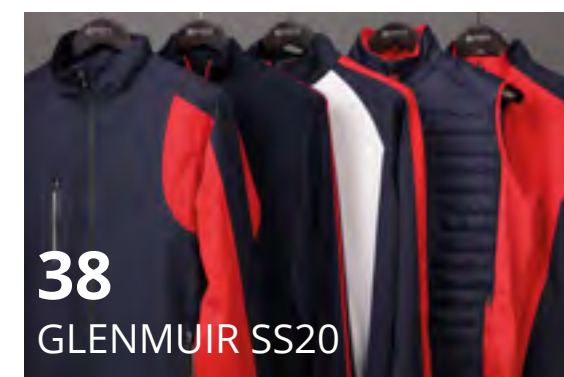
W: crudenbaygolfclub.co.uk

T: +44 (0) 1779 812285

Royal Aberdeen Golf Club

W: royalaberdeengolf.com

T: +44 (0) 1224 702571



VIEW

EQUIPMENT & APPAREL

REVIEW



THE NEW **MP-20** RANGE

LAYERS
OF FEEL 層状の打感

REACH BEYOND



PENETRATING ADVICE

When a professional golfer says to you that you should test the Srixon Z785, it is imperative that you listen. With the One Ocean Cruise to Ireland and Scotland coming up James Mason thought that this would be the perfect time to put it in the bag and see what all the fuss was about.

TECHNOLOGY

Srixon state the new titanium Ti51AF Cup Face, on the Z785 gives this driver the thinnest, lightest, strongest and hottest driver face they have ever produced. It also means that it has a larger sweet spot, helping maintain ball speeds on off-centre strikes.

This also works with the lightweight carbon crown which has been produced by Mitsubishi, Srixon state it's stronger than you'll find in a Callaway driver, but it also gives the Z785 a softer feel. The Srixon R&D guys were able to shift some of the weight saved in the crown to the perimeter again helping golfers with more forgiveness on those off-centre strikes.

As you would imagine with a low-spinning driver the Z785 gives you a low penetrating trajectory, which is what their tour professionals were looking for, as you can see from this quote from Keegan Bradley "This driver's faster. This driver's longer. This driver's better," stated Bradley. "It's really coming off hot and straight. It's very forgiving and the sweet spot is really big."

The Z785 is an adjustable driver using Srixon's Quick Tune System, which allows you to adjust both the loft and swing weight. The driver comes with the project X Hzrdus shaft as standard, but there are other custom shaft options available. →

Left top: Titanium Ti51AF Cup Face technology. Left below: Mitsubishi lightweight carbon crown

CONCLUSION

The first course I teed the Z785 up on was Machrihanish Dunes, followed by Glashedy Links at Ballyliffin home to the 2018 Irish Open and culminated in rounds at Royal Dornoch and Cruden Bay and I loved every minute of crashing this driver down those fairways.

The low spinning penetrating ball flight was perfect for these links courses and that cup face really does what it says on the tin, the ball really does rocket off

the face. I loved the finish on the crown where you could see the carbon fibre pattern at address and the new alignment is a nice touch and I also feel the black gives the driver a perfect classic finish.

It has been a great year for drivers and the Srixon Z785 can be added to that list, from the four rounds played I only missed a handful of fairways and that was probably more down to me not playing the wind correctly.

I enjoyed the feel and sound at impact which a lot of drivers have struggled with and of course distance.

This is a driver aimed at the lower handicap market, but with its adjustability and forgiveness I am sure there are mid handicap players who would enjoy this club and get a few extra yards with its low spinning, penetrating ball flight, especially with that added forgiveness.

VIDEO REVIEW ▶

Srixon Z785

LOFT 9.5°

SHAFT Project X Hzrdus

FLEX Stiff

SET UP Std

RRP £245.00 / €299 / \$249.99



Above: Toe view.
Above right:
Address view



Mizuno's new copper layer may not be as illegal as Steve Earles family moonshine business, but that pure feel at impact has got professional golfers all over the globe heading down the copperhead road. James Mason finds out what all the fuss is about

THE COPPERHEAD ROAD

TECHNOLOGY

Grain Flow Forged in Hiroshima, Japan, the new MP-20 family comprises of the MP-20 MB, MP-20 MMC and MP-20 HMB, each has its own unique appeal and like recent models in both the MP and JPX range can be blended into custom combo sets, the soft copper plating beneath a protective nickel chrome delivers that legendary

TN87 feedback and feel.

MP-20 MB is a pure muscleback influenced by Mizuno's most revered blades like the TP9s and 11s, MP 15s and TN87s using a Grain Flow Forged HD from a single billet of 1025E Pure Select mild carbon steel.

The MP-20 MMC is the pros cavity iron and is the second- →

generation of Mizuno's multi-material concept, also forged from 1025E Pure Select mild carbon steel but has a thinner topline. The MMC shares the same chassis, set flow and proportions as the MP-20 MB, but with enhanced playability by utilising a titanium muscle plate and tungsten sole weight.


MP-20 HMB is a hollow-headed 'Hybrid Muscle Back' with a tour-ready profile that features Mizuno's forged Chromoly material in the face, neck and utilises two 12g tungsten weights helping forgiveness and stability. The design is inspired by the rise in popularity of long iron replacements on tour but takes that a step further by extending the concept down to the wedges.



Left: Mizuno's split cavity. Right: Bevelled sole and bounce

Right: Face and hosel view. Below: Toe and sole view



VIDEO REVIEW 
Mizuno MP-20 MB, MMC & HMB
SET UP -2°
SHAFT Project X 6.0
FLEX Stiff
RRP £135 Per Iron / €175
Per Iron / \$1049.99 4 Iron-PW

CONCLUSION

Just when you thought the feel of a Mizuno couldn't get any better at impact, they come up with their copper technology and as I watch my warm up 9-iron on the range fly through the air, it's the strike that has me buzzing. It's like a hot knife through butter, it just seems to melt into the back of the ball and feels so pure.

I am testing a blended set with MB PW-7 irons, MMC 6-4 irons and HMB 3-2 iron. One of the main design features that strikes me is the HMB 3 and 2 irons, as they look like a bladed MB iron, the only difference you will notice between these and the muscle back is the wider sole and slightly wider top line, but they look perfectly matched with their finishes.

I am really enjoying the way you can combine all three models of the MP 20s, being able to use the lower irons to work the ball into greens, moving to the longer irons utilising the MMC and the HMBs forgiveness on those off-centre strikes. I would suggest you get fitted not only to find the shaft that gets the most out of your swing, but also the make-up of your set so you can mix the three models to get the most from your golf game. No matter what model or combination you decide on, I am confident that you will love every minute of playing the new MP 20s from the sound at impact to the feel as the blade sends the ball towards its target, they really are that good.

DEFYING GRAVITY

We all know the old phrase “drive for show and putt for dough”, but being able to hit a 300-yard drive means nothing if you 3-putt every green. I am always excited to test a new putter especially when I know Guerin Rife has been involved with the design.

TECHNOLOGY

The ER8.3 is a flow-neck Players Mid Mallet, which Guerin Rife himself is describing as the “prettiest putter” he’s ever designed. Evnroll use the tag of the “Sweetest face in golf” which comes from their patented “Sweet Face” Technology, a unique milling pattern engineered to deliver uniform performance across the entire hitting area of the putter face for accuracy and zero dispersion. The ER8.3 uses this CNC-milling process from 303 Stainless Steel and is hand-finished in its factory at Carlsbad, California.

This year Evnroll are using the Gravity Grip technology in their new range, the deep V-shaped grip incorporates an ultra-light 35 gram

EVA foam body with a 70 gram 9” steel rod that runs the length of its extreme lower section.

Moving twice the grip’s structure weight directly below and ½” away from the shaft allows the hands to feel and maintain a square putter face through the entire hitting area, virtually eliminating face rotation at impact.

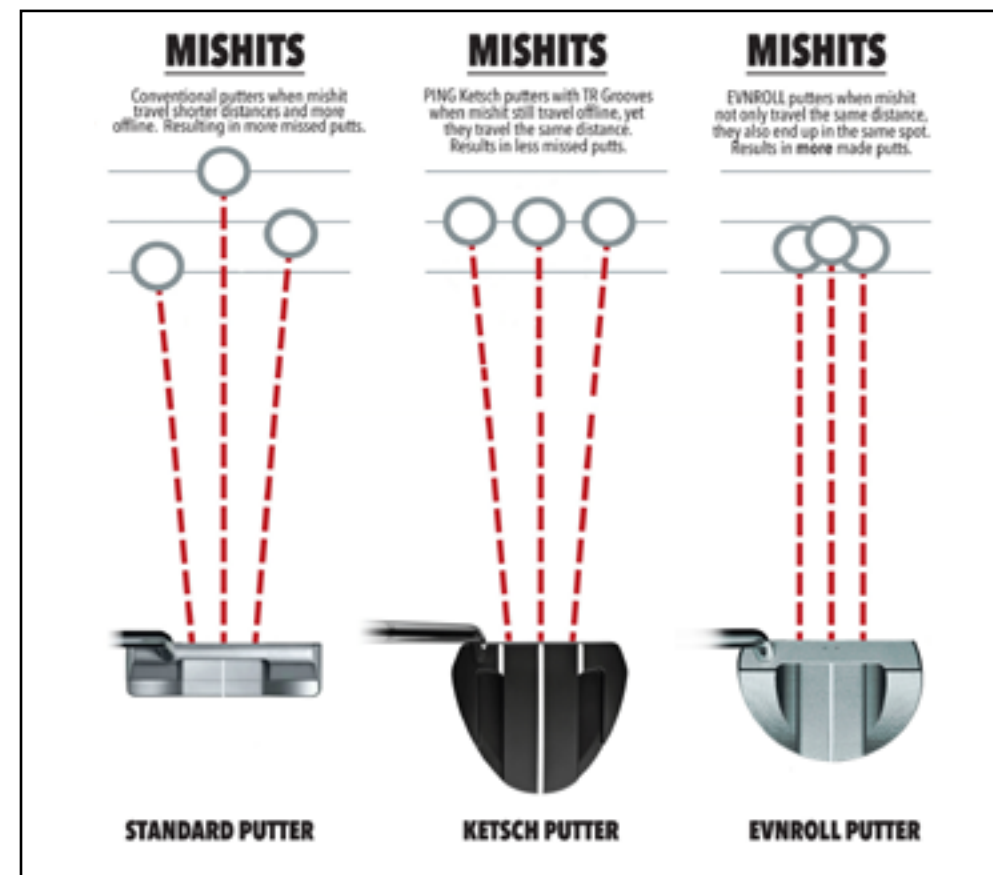
Adding the 15 gram outer wrap the Gravity Grip has a total weight of an above average 120 grams. This allows for more weight in the putter head to generate a greater overall weight for increased stability and accuracy, while maintaining an ideal swing weight for optimum feel and distance control. →





VIDEO REVIEW ▶
Evnroll ER8.3
LOFT 2°
LIE ANGLE 70°
LENGTH 33"
RRP £319 / €379 / \$359

Top left: Address view with the two dots. Left: Back view with alignment line. Above: Comparison dispersion graph. Right: Evnroll new model line-up



CONCLUSION

Until you get the putter in your hands you will not realise how impressive the Gravity Grip technology is, especially to those like me who use a pendulum type putting stroke. I know this is a bold statement, but not since I was a kid and picked up my first Anser putter has there been a game changing putter.

Evnroll are renowned for their face technology, but by adding the Gravity Grip technology they have moved putter design to another level. I tested this putter on my trips to Ireland and Scotland playing both inland and links courses and it was probably the best putting stats I have ever produced. The feel off the face, the way it sits behind the ball all help breed confidence and I can see why Guerin said the ER8.3 is the putter going in his bag.

Putters are such an individual club, but you need to get the ER8.3 in your hands. There are four other models in the range that I have yet to test, but believe me when you stroke a putt with this model you'll probably not bother with the rest, it is that good.



THE **SWEETEST** FACE IN GOLF

CLASSIC
DESIGN...



BREAKTHROUGH
TECHNOLOGY



evnroll.com

100% MILLED IN THE USA

ARE YOU SERIOUS?

James Mason feels the Shot Scope V2 is that important to serious golfers we are deciding to run this feature again from last year

CONCLUSION

I have decided to run this feature again from last year's Christmas issue because if you take your golf game seriously and want to improve then the Shot Scope V2 is probably your best option after having lessons with your local pro and practice, it really is that good. After another year of using the V2 on courses across the world in different weather conditions and different types of courses, I now know my golf game inside out.

When I take a club out of my bag I know to within a yard of how far I hit each iron and how far I hit each of my wedges, having that information coupled with the GPS distances on the watch and also my rangefinder my accuracy has

improved vastly, along with my scores.

The added bonus is now my practice sessions have become a lot more focused as I can pinpoint all my weaknesses from the data that is stored from each round I play. On a recent testing trip to Tuscany I played with a couple of other journalists, one I hadn't played with for a couple of years and one I had played with in February this year, both remarked how much my game had improved since we last played. My golf swing is exactly the same, but I now have a few key swing thoughts that I have worked on with my pro, but the major change is the parts of →



More than a watch,
more like a mini
code breaker



Above and right: Direct feedback to your phone app



Above: Detailed feedback of your stats on your laptop or PC

my golf game I practice and have improved on and that is all down to having the information from the V2.

Shot Scope V2 is not only the perfect gift if you are thinking of Christmas presents for the golfer in your family, but it's the perfect gift to yourself.

TECHNOLOGY

Shot Scope V2 combines advanced GPS technology with automatic performance tracking to give you the perfect golf watch helping your game on and off the golf course.

Shot Scope has built upon the success of version 1, of the automatic club recognition technology with tour-level performance statistics, but have now added accurate front/middle/back GPS yardages to the green.

Chief Commercial Officer, Gavin Dear, stated "The level of demand was evident from the beginning and it's great to see how customers are reacting to the product. We are proud of the innovation behind V2 and believe it will help to transform the way golfers of all levels experience the game."



Above left to right: The app gives you goals to unlock and you can also compete with friends and fellow golfers around the world

Shelters From The Storm

LATE SEPTEMBER AND THE EVER CHANGING WEATHER CONDITIONS IN THE LAKE DISTRICT, JAMES MASON PUTS SUNDERLAND'S AW19 OUTER WEAR TO THE TEST





TECHNOLOGY

The Aspen Midlayer top utilises a bonded interlocking stretch polyester with a mesh inner and a Teflon performance material that has a water-repellent finish. The midlayer technology is sweat wickering so the garment is breathable while at the same time keeping you warm.

The Vail Winter trousers also uses a thermal Telfon performance stretch material that has a bonded fleece backing which adds warmth and comfort. They are coated with a water-repellent finish, but are breathable and like the Aspen Midlayer utilises the wicking technology to wicker sweat from the inside to the outside of the garment so it evaporates.



CONCLUSION

What better place to put the AW19 Sunderland range to the test than during late September rain on a warm day in the Lake District. The weather was perfect for putting all of Sunderland's technologies to the test, not only keeping you dry and cool in constant changing weather, but when it suddenly changed and a sudden front of cold air came down off the hills the technologies changed from keeping me cool to keeping me warm.

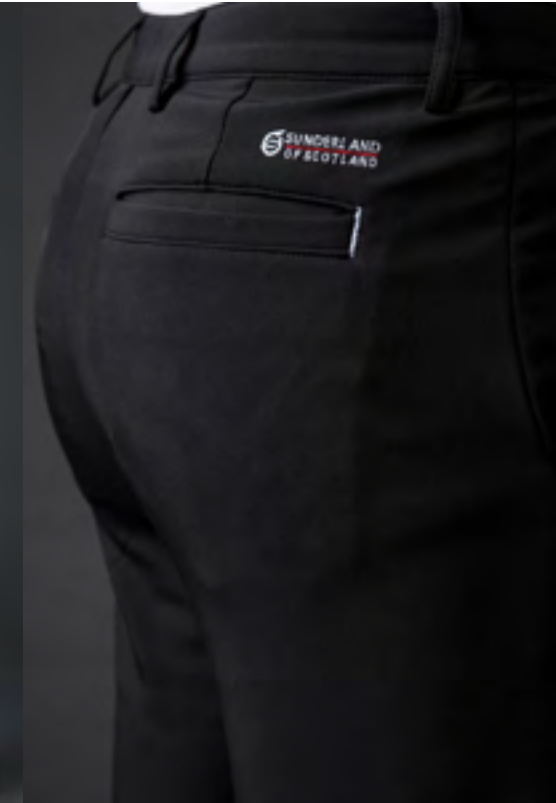
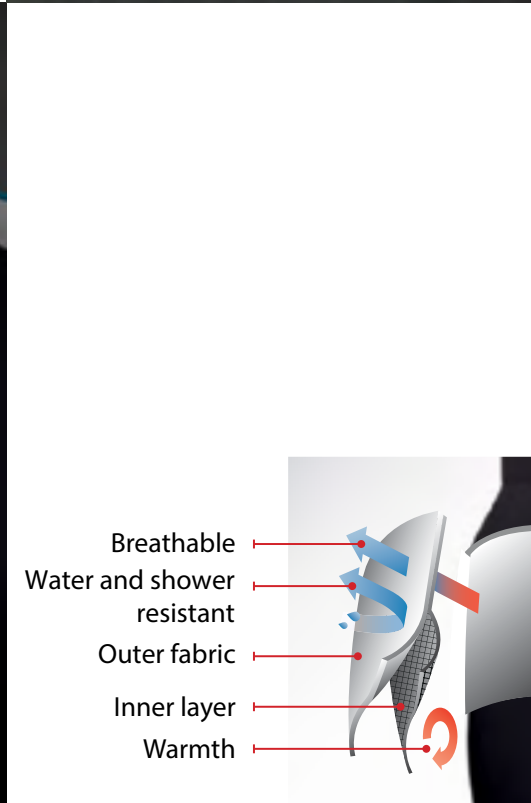
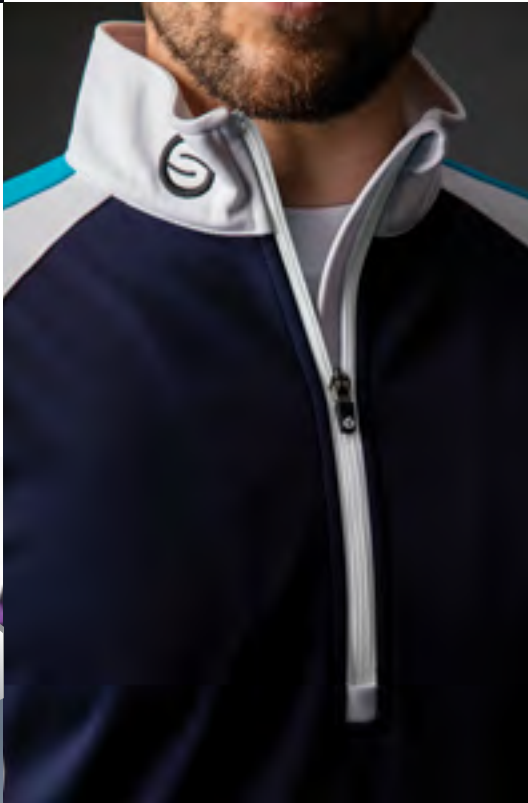
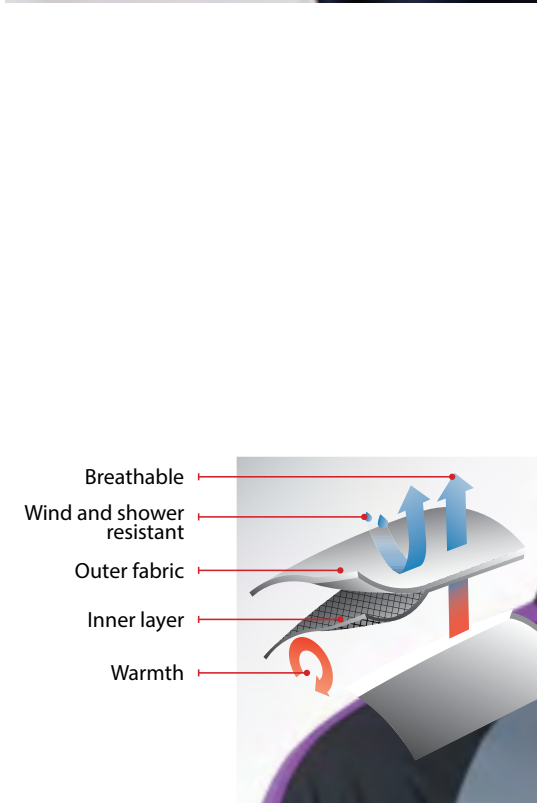
I have to say I was worried when I put on the Vail trousers with their bonded fleece lining, I get hot very quickly and I will admit that I took the Glenmuir Cuthbert trousers with me just in case I got too hot – Oh ye of little faith!! The wickering was perfect and while I walked

around Windermere Golf club with its changing weather from hole to hole, not once did I feel too hot or too cold, when those cold snaps suddenly appeared.

Like the Vail Trousers the Aspen Midlayer also performed outstandingly, wickering away the heat from inside the top out, but keeping me dry in the rain and again like the trousers keeping me warm during the cold snaps, all this while looking stylish, the perfect combination.

ASPIN MIDLAYER
£175 €199 \$230

VAIL WINTER TROUSERS
£120 €136 \$158



GLENMUIR

1891

CRAFTING SCOTTISH QUALITY SINCE 1891

www.glenmuir.com





Weather with you

GLENMUIR APPAREL HAS BEEN WORN BY RYDER CUP HERO'S AND MAJOR CHAMPIONS, WE PUT THEIR SS20 COLLECTION TO THE TEST IN TUSCANY AND WINDERMERE.

TECHNOLOGY:

MEN'S POLO SHIRTS:

MURRAY POLO:

100% performance polyester with an anti-curl ribbed collar and cuffs

HAMISH POLO:

100% double mercerised cotton also comes with the anti-curl tailored collar and has a tartan pattern on the under placket, rear collar and cuffs.

MEN'S KNITWEAR

ROXBURGH KNITWEAR:

Made from pure combined cotton for durability, softness and breathability →

**ROXBURGH
KNITWEAR**
£110 €150 \$109

HAMISH POLO
£110 €150 \$109

**CUTHBERT
TROUSER**
£75 €100 \$74.99



MIDLAYER AND OUTERWEAR

MELROSE BODY WARMER:

Utilises Glenmuir's 3-layer storm bloc technology and comes in a soft-shell fabric that is highly waterproof, windproof and breathable

MELROSE BODY WARMER
£110 €150 \$109



MEN'S TROUSERS

CUTHBERT TROUSERS:

Uses an active functional moisture wicking fabric for thermoregulation and has a brushed fleece backing.

MURRAY POLO
£110 €150 \$109



CUTHBERT TROUSER
£75 €100 \$74.99



LADIES POLO SHIRTS:

HARLOW POLO:

Like the men's polo the Harlow uses an anti-curl lurex tipped rib collar and cuffs. The 100% performance polyester pique uses side shaped panels and includes breathable wicking technology to move sweat from the inside to the outside of the garment which also offers UV protection.

LADIES SKORT:

ALMA SKORT:

This lightweight skort utilises a 89% polyamide and 11% elastane mix, with two patch back pockets. Like the Harlow polo the Almas uses a wicking technology and comes in a choice of seven colour options with Rhinestone diamanté button and studs.

HARLOW POLO
£110 €150 \$109



ALMA SKORT
£75 €100 \$74.99



CATHAY VISOR
£110 €150 \$109



ZOE BELT
£110 €150 \$109



CONCLUSION:

It's the little things that tell you a golfer has been involved in the design process and not just an apparel designer that has no idea of a golfer's needs. This was apparent when I tested the trousers as the inside waist band used a rubberised strip that holds your shirt in place during your swing yet it doesn't restrict you while you are in full flow. During testing at the four courses in the Lake District and Tuscany where the weather was warm the wicking system in all the garments was put to and certainly passed that test.

Many golfers travel on various tours and

road trips, the good news is the SS20 Glenmuir range not only looks good on the course but also off it. Purchase a few items that can be mixed and matched on the course and are versatile enough for those nights out to restaurants and night clubs.

There is also an added bonus the lightweight material used means you can pack several outfits while keeping inside the airline weight restrictions. If you are looking to update your golfing apparel wardrobe or looking to buy a Christmas gift for a golfer then I suggest you look at the new Glenmuir SS20 range.

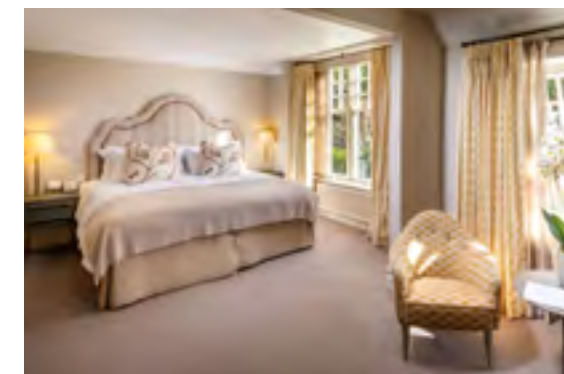




47 LINTHWAITE HOUSE



REVIEW



VIEW.COM

STAY, PLAY & SPA

SOUL SAVER

While **Charmaine Hibbert** finds the perfect spot to watch the majesty of Mother Nature at work **James Mason** finds two golf courses to combine playing while soaking up the wonderful vistas of the Lake District





The magnificent views of Morecambe Bay at the 18th

ULVERSTON GOLF COURSE

After a 5-hour drive I find myself mesmerised by the view over what turns out to be Morecambe Bay as I reach the top of the steps leading to the clubhouse from the car park. Unfortunately, with a weather front coming in we have decided tomorrow would be a better day to play as it's predicted to be sunny and clear. What a great decision that turned out to be, just when I thought those views couldn't get any better it seems the whole of the North-west and the Lake District were hiding behind that cloud cover.

After a warm-up using the fantastic practice facilities on offer, I am standing on the first tee with past captains Neil and Kevin; it seems the

club has also put in a new policy of meet and greet, so those turning up for a round of golf are welcomed by a club member, which I feel is a nice touch.

The 1st measures 341-yards from the white tees but there are three teeing options to choose from and with a bit of advice from Neil to aim slightly right of the marker post with a slight fade, I duly oblige leaving myself a little wedge in and miss my birdie putt. For the longer hitters the 2nd could be in range but beware as there are two bunkers ready to catch a wayward shot and with the green being raised it's not as easy as the yardage would have you believe.

The 3rd hole is known locally as Red Road →



LINTHWAITE HOUSE

“Nothing can quite prepare you for when you walk into the gardens and see that view of Lake Windermere meandering its way through the hills”

I had obviously seen images of Linthwaite House when they sent them through to go with this feature and I was looking forward to my stay here in the Lake District, but nothing can quite prepare you for when you walk into the gardens and see that view of Lake Windermere meandering its way through the hills. It's just a shame it's late afternoon on a grey day in late September, if it looks this stunning now, it must look majestic during the summer months especially with the sun setting over those hills.

One of the things that also struck me as I made my way around the beautiful gardens was the sculptures, you may already know about SIT by Angus Taylor which is perfectly positioned aside that view of Lake Windermere, but there are others dotted about the grounds including Striding Tiger by Dylan Lewis, which sits on top of an incline and Wild Albert by William Peers which is made of Italian marble that again has the lake as its backdrop and surrounded by wild flowers. →

Below: The beautiful views of Lake Windermere from the patio





and I am informed come the autumn months the avenue of trees that line the fairway turn red and I can just imagine how beautiful that looks. The first of the par 5s arrives at the 4th and a good drive especially in the summer months could see you getting some extra yardage from the hill that takes you down towards the green.

This is followed by a tough little par 3, which may only measure 156-yards but is protected front and left by bunkers and anything short that doesn't go back down the hill will see you playing from the sand.

The course has a strange feeling to it, with the many pines and different tree species here it feels like it could be a heathland course, but it is actually a parkland course.

The back nine opens up with a short par 3, but it's the views that open up at the 11th that will have your soul purring with appreciation, →

Top: Raised green at the 2nd hole. Below: Looking back to the tee at the par 3, 5th.



Top: The classic modern decor of the lake suites. Left: Deep soaker tub to relax and destress

“I am informed come the autumn months the avenue of trees that line the fairway turn red and I can just imagine how beautiful that looks”

On my way up to my room I also spot Diana by Otto du Plessis in the trees near the path; bronze sculptures of a girl following a family of deer, there are many more sculptures dotted around the grounds for you to enjoy. The best sculpture of all is of Mother Nature and just outside my room they have placed a double seated swing that sits in the trees and looks down on the Lake; it was a place that I found myself being pulled to each evening to sit, contemplate and soak up the sheer beauty of my surroundings.

There are several room options here but my suite is part of the recently built complex that sits just above the main house. I was shown around my suite which was a tech lovers' dream, controls →

you see Ulverston is blessed with views across Morecambe Bay to one side and the beautiful countryside of the Lake District the other and if you're having an off day on the course, then just take time to soak up the wonderful vistas on offer.

The back nine just offers one enjoyable hole after the other with my favourites being the 11th with its sweeping tee shot down the hill, the par 5, 13th that funnels through trees and must look stunning in the autumn months. The run in from the 15th you will see rock outcrops and the Wilson Gale Monument which was erected in 1792 at the 17th and play four very well-designed golf holes.

The original course was designed by Sandy Herd, but one Harry Colt undertook the redesign and you can see that especially with some of the green designs and complexes and he has certainly made the most of this stunning piece of land. I would recommend you don't leave the Lake District until you have teed it up here, you certainly won't see to many more spectacular views on any of the other walks that are recommended in this part of the world.



“The back nine opens up with a short par 3, but it’s the views that open up at the 11th that will have your soul purring with appreciation”

Top: The sweeping fairway at the 11th.
Left: The Wilson Gale Monument at the 17th

Below: Elevated tee at the 12th hole

WINDERMERE GOLF COURSE

The forecast is not looking good today but I am determined I am going to play this course, the reason I say that is not only have I seen photographs of the course, but as I was driving from the dual carriage way to get to Linthwaite House where I was staying, I was looking at the terrain I was driving through subconsciously thinking this would be perfect for a heath-land type golf course and suddenly out of nowhere golf holes appeared; I had to chuckle to myself as I passed the entrance saying welcome to Windermere Golf Club.

It seems great minds think alike as George Lowe (he of Royal Lytham St Anne's fame) de-cided the same and first designed a 9-hole course here which was later extended to 18-holes due to the course's popularity.

Unfortunately, there is no video with →



Hotel bar and conservatory

for the lights have different levels of brightness, the double aspect floor to ceiling sliding doors that open by the press of a button in both the sitting room and bedroom, the louvre windows and its electronic cover and the corridor guide lights that are motion sensed during the night.

It's time for the face dive into the fresh cotton pillows, the bed is firm which I like, with fresh cotton sheets and duvet. The suite is decorated in classic white with beige and brown furnishings and natural wood lampshades and the bathroom has marble finishes with walk in rainfall shower with natural stone tiling.

STELLA RESTAURANT

I know James wanted to visit here in September for the golf courses, for me it wasn't the best timing as in October chef Simon Rogan will be opening his Henrock

restaurant which will use locally sourced ingredients from his farm just 30-minutes away.

We walk down to the main house for dinner and are welcomed by the staff who let us choose where we would like to be seated, the restaurant has a nice relaxing feel to it and is decorated with some rich warm oranges, browns and greens again with a classic modern feel. After our drinks orders we are served an Amuse-bouche of fried green pepper with a creamy leek and rock salt filling, which glided down perfectly tantalising the taste buds to what is to follow.

While James started with the Oak Smoked Duck Breast I went for the Loch Duart Salmon three Ways, one was citrus marinated, one was poached and the final piece was spice roasted and was accompanied by sugar snap peas, crème fraiche. For me it was the perfect starter →

this review as the heavens had opened during the night and blessed us with the kind of rain Noah sailed his ark through. I was surprised the course was open and even more surprised that after crashing my drive over the stone out crop with its marker post on top and hitting a wedge to the middle of the green, how quick-ly the course had drained off that deluge, sensibly buggy’s weren’t permitted due to safety so I couldn’t take my video equipment with me.

The 2nd brings up the first of the par 3s on the front nine with the green seeming to sit like an infinity green in the distance between trees some 225-yards away. Like the 1st the 3rd is another drivable par 4, but both can punish an off-line drive with deep heather and bracken just laying off the fairways and here with out of bounds running down the left-hand side.

As I make my way round I find myself hitting hybrid and 3-woods off the tee, position here is much more important than length and anything wayward is severely punished, that is if you find your ball. If the heather and bracken doesn’t get you then the odd large pond that has been perfectly placed for the longer hitters like at the 6th, will – I could certainly rec-ommend a course planner as the pond is not visible from the tee.

The 8th brings up the second par 3 and some wonderful views across the Lake District, there is even a plaque by the bench to help →



Above: Blind tee shot at the 6th hole. Below: Looking down to the 5th green.

“As I make my way round I find myself hitting hybrid and 3-woods off the tee, position here is much more important than length and anything wayward is severely punished”



Above: The Conservatory bar. Below: The perfect place to sit and absorb the beauty of Lake Windermere and Mother Nature

and showcased how you can cook salmon in three different ways giving a variety of different flavours.

Next came the Roast Cumbrian Lamb Loin which was accompanied with spinach, summer truffle, foie gras mousse and Périgux sauce with sides of King Irish roasted carrots and hand-cut potato wedges. The lamb was cooked to perfection, succulent and tender, what did surprise me was the gravy that it came with which was tasty, rich and really added to the enjoyment of the lamb with the flavours playing against each other.

For dessert – yes we did manage it!! – it had to be the Baked Apple which came as a crumble with blackberries and fresh custard, we both looked at each other with grins on our faces, you really can’t beat a good crumble. This wasn’t a traditional crumble, this dish was prepared with the baked apple on the outside with the crumble and blackberries at its heart, it was the perfect end to the day. →





“The gardens and the boating lake added to the beauty of its surroundings, but it’s the position that Linthwaite House occupies and the way it sits above Lake Windermere that sets it apart.”

you recognise and pinpoint well known peaks, hills and lakes on the horizon, but don’t lose concentration on the task at hand anything short of full focus here will see you heading back down the valley you have to play over to make the green.

The back nine opens up with a downhill par 3 and is protected by a little stream that is just short of the green, which is slightly raised so anything missing left or right will take those run offs. There is a great run of holes from the 12th to the 15th which includes two well designed par 3s. The 17th is all about being in the right part of the fairway anything from the

middle right will block you out of seeing the green and you would be better off in the left rough than the right fairway. The course closes with another par 3 this time playing 201-yards slightly uphill, don’t be fooled as the green is deeper than it appears.

Windermere GC may only measure 5,122-yards from the white tees, but like Mike Tyson this little beast packs a mighty punch if you take it lightly. Play smart and you will have a wonderful round of golf over some fantastic terrain with amazing views, try to overpower it and it could become very expensive on the scorecard and ball count.



Back-to-back par 3s at the Top: 14th and Left: 15th holes



Top: The small boating lake on the property.
Below: Some of the sculptures dotted about the gardens

SPA

Unfortunately, I didn’t have time to sample the in-room spa treatments, but they are available on request.

CONCLUSION:

The three days we spent at Linthwaite House were idyllic, the staff and service were excellent and very attentive without being overbearing, the rooms were beautifully appointed and designed perfectly to make the most of the views. The gardens and the boating lake added to the beauty of its surroundings, but it’s the position that Linthwaite House occupies and the way it sits above Lake Windermere that sets it apart.

If you are looking to unwind from this mad, fast paced world and soak in the very best of what Mother Nature has to offer and just sit and let your soul sing, you need to spend some time at Linthwaite House, your whole being will thank you for it.

Linthwaite House

Crook Rd, Bowness-on-Windermere, Windermere LA23 3JA

T: 015394 88600

W: leeucollection.com/UK



dmd

ENQUIRES@DIGITALMAGAZINEDESIGN.COM
DIGITALMAGAZINEDESIGN.COM
+44 (0)7860 724 897



AT YOUR DIGITAL SERVICE

Digital Magazine,
Web Banners or
Promotional Material

Template or
Custom Design

eBook,
Interactive PDF,
Flash, JPG, TIFF,
PNG, PSD

Documents from
8 – 100+ pages